

# Right-of-way (ROW) clearing

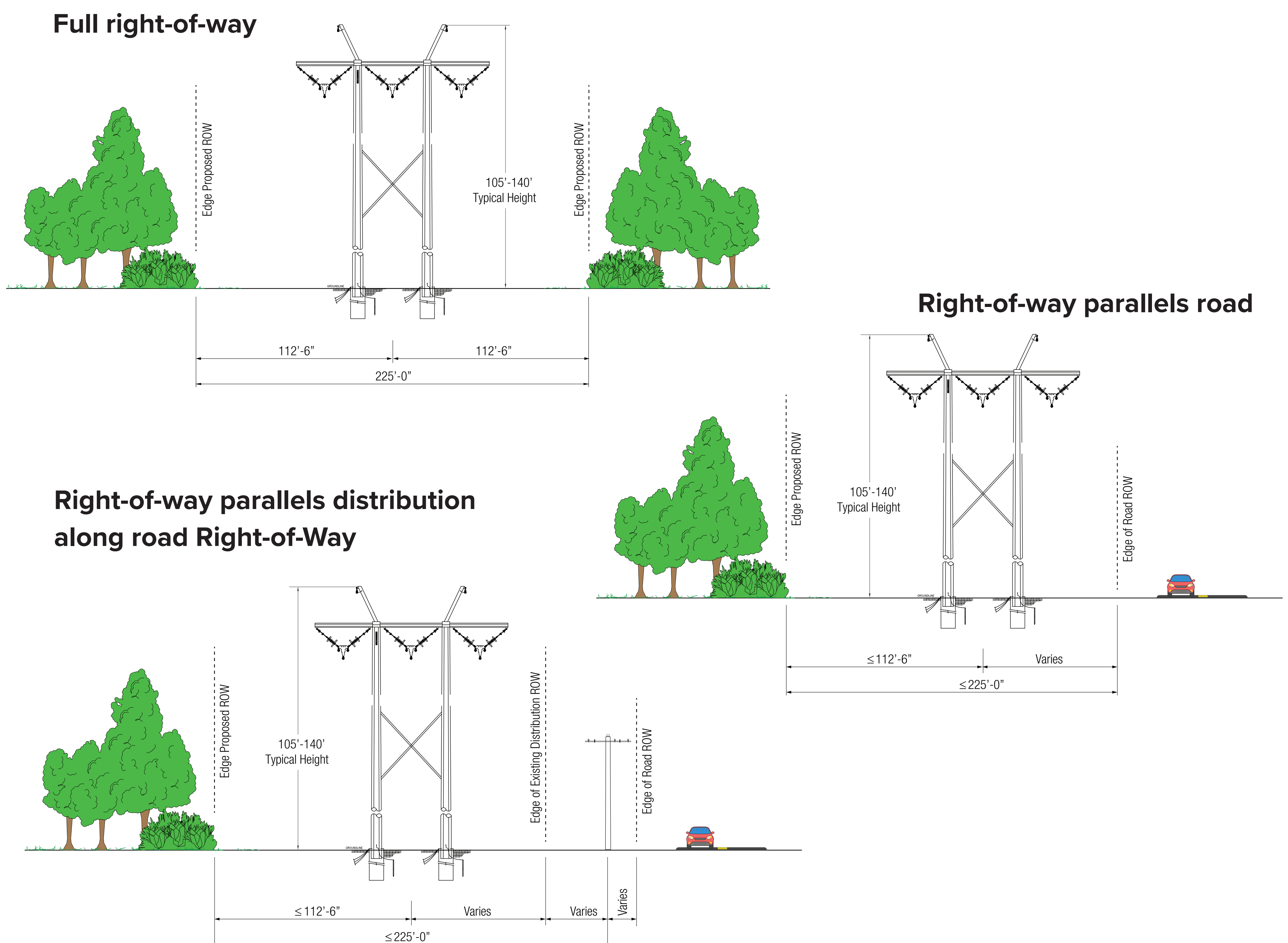
## Cypress to Legend 500 kV Transmission Line Project

### About right-of-way clearing

- Trees and branches near or touching power lines can cause service interruptions.
- Electricity can arc or “flashover” from wires to nearby trees before actual contact is made, causing electric current to flow through the trees into the ground.
- To ensure everyone’s safety, Texas, like most states, has adopted the National Electrical Safety Code.
- The code establishes mandatory clearances to be maintained around power lines.

### Typical cross sections

Dimensions may vary depending on location and spatial constraints.



At Entergy Texas, Inc., we have a simple set of values: Focus on our customers, treat people with respect and act with integrity. Our project construction plan will be developed with you, our valued customer, in mind. Once work begins, we will work safely during reasonable hours with as little inconvenience to you as possible.

